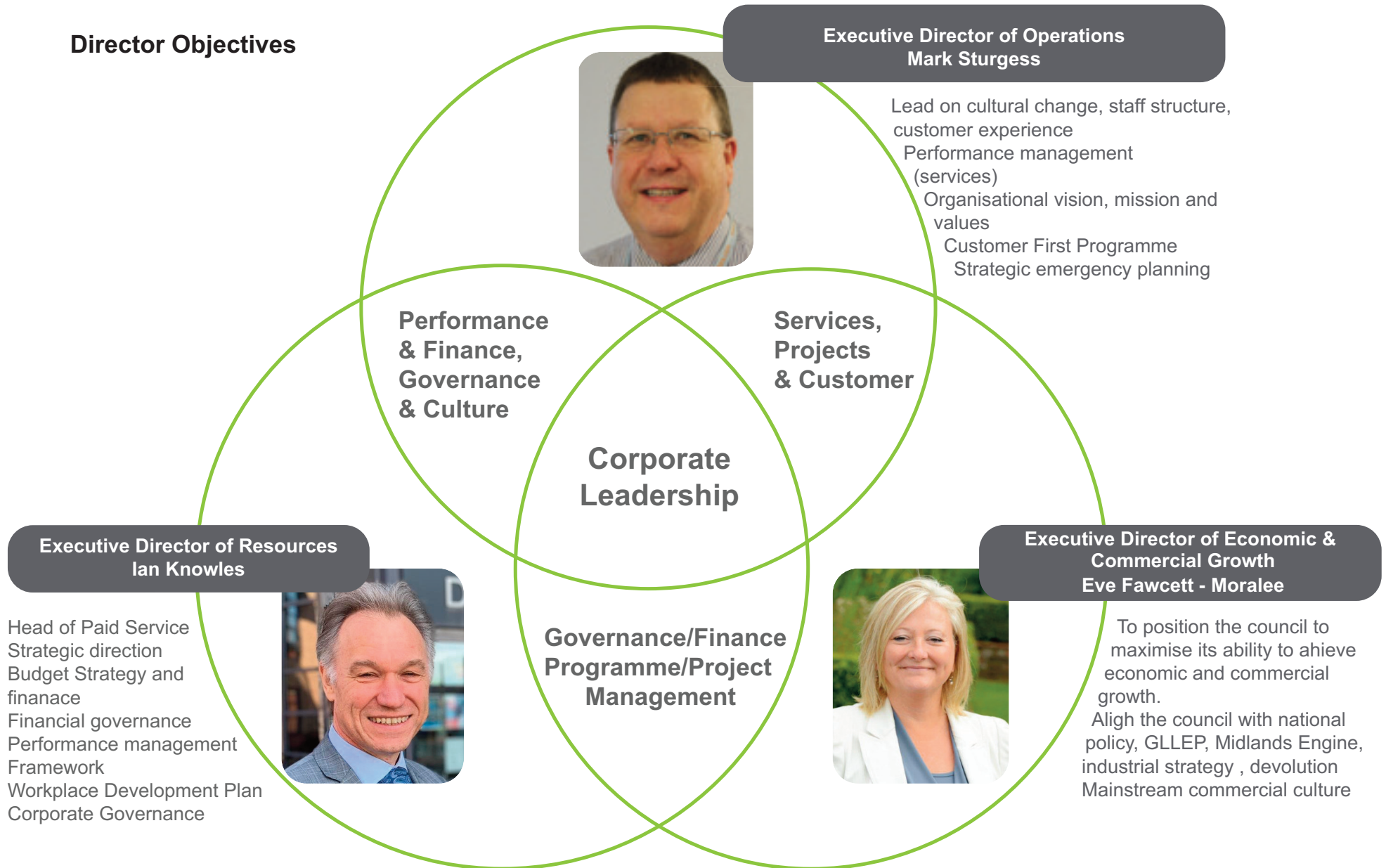


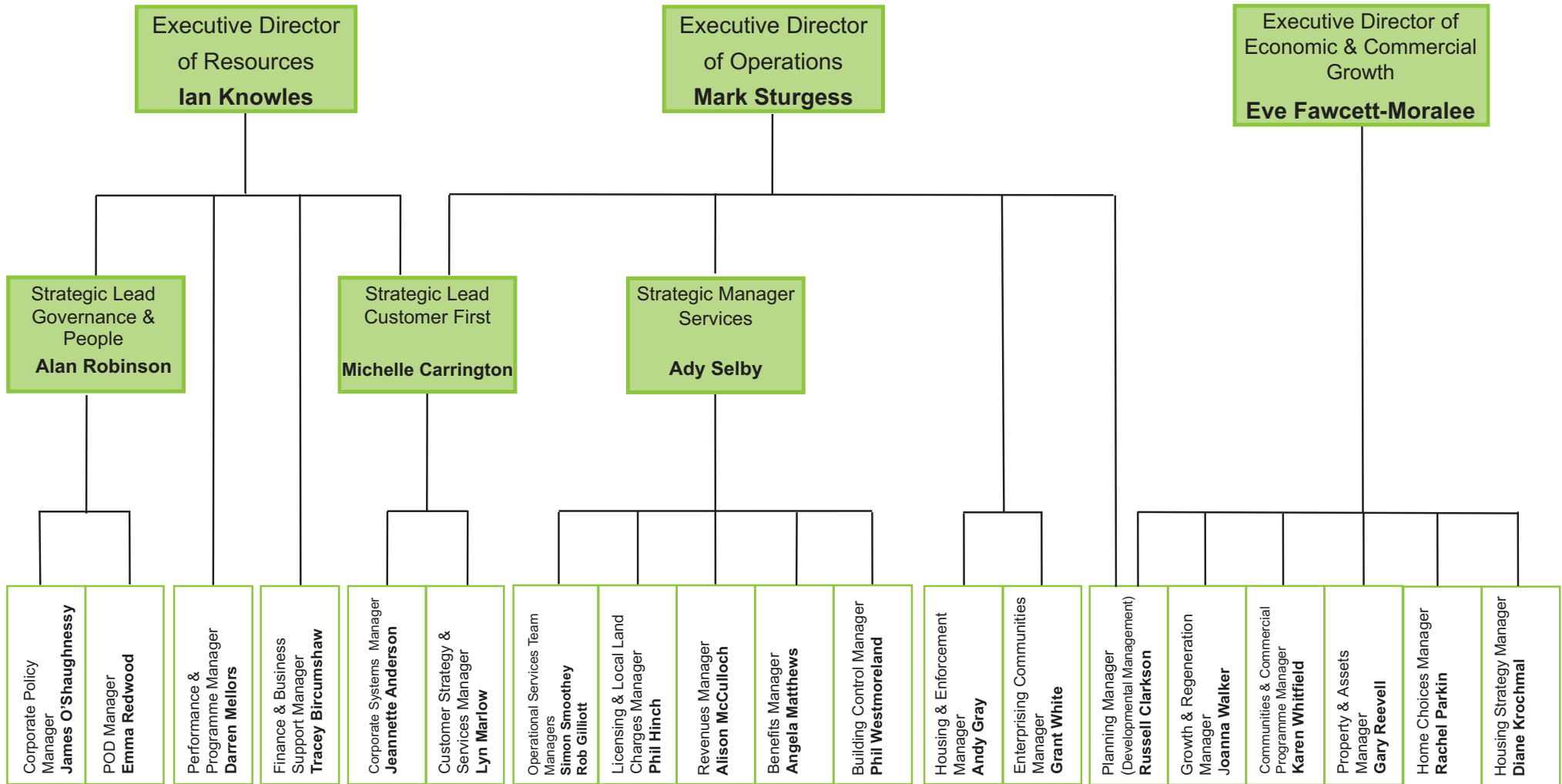
Part VII - Management Team Structure



Director Objectives



Management Structure



Strategic Lead—Governance & People Monitoring Officer
Alan Robinson
01427 676509 / 07775 026237



Human Resources & Communications
Governance
Democratic Services
Elections
Member code of conduct
Monitoring Officer

Strategic Lead—Customer First
Michelle Carrington
01427 675134 / 07890 610173

Customer First Programme
Customer Services
ICT/Systems Development



Strategic Manager Services
Ady Selby
01427 675154 / 07810 658296



Operational Services, Licensing,
Revenues, Benefits, Building Control.
Garden Waste Consultation,
Gainsborough Markets Review,
Depot renewal/relocation,
Operational & Tactical Emergency
Planning

Growth & Regeneration Manager
Jo Walker
01427 676633

Growth Team
Gainsborough Regeneration
Food Enterprise Zone
Economic Strategy
Market Town Regeneration
Rural Regeneration



Communities & Commercial Programme Manager
Karen Whitfield
01427 675140 / 07790 923001



Programme—Crematorium
Regeneration, tourism, Mayflower 400
Food Enterprise Zone
Economic Strategy
Market Town and Rural Regeneration &
Leisure Contract & Renewal
Environmental Energy Projects
Trinity Arts Centre

Property & Assets Manager
Gary Reeve
01427 676561

Capital Works Schemes
Asset Management
Repairs & Maintenance
Car Parking
Facilities & Estates Management



Planning Manager (Development Management)
Russell Clarkson
01427 676641 / 07816 294174



Development Management
Planning Applications
Conservation & Trees
Major Projects

Corporate Policy Manager & Deputy Monitoring Officer
James O'Shaugnessy
01427 676537 / 07920 295576

Governance:
Risk
Audit
Information Governance
Procurements
Democratic Services



Performance & Programme Manager
Darren Mellors
01427 676547



Project & Programme Board
Performance Management
Business Intelligence

Finance & Business Support Manager
Tracey Bircumshaw
01427 676560 / 07790 922712

Financial Services
Treasury Management
Insurance
Creditors / Fraud
Company Support



Corporate Systems Manager
Jeannette Anderson
01427 676649 / 07917 051437



Systems Development
Corporate IT systems / website
Street Naming & Numbering
Intelligent Client—shared ICT service
OS Liaison officer

Customer Strategy & Services Manager
Lyn Marlow
01427 676684 / 07810 658364

Customer Services
Translation Services
Digital Volunteers
Out of Hours contract
Complaints & compliments



Waste & Recycling Team Manager
Rob Gilliot
01427675105 / 07810 658297



Waste Services
Recycling

Revenues Manager
Alison McCulloch
01427 676508

Council Tax
Business Rates
Sundry Debtors



Street Cleansing Team Manager
Simon Smoothey
01427 675123 / 07776 163770

Street Cleansing
Markets Operations



Benefits Manager
Angela Matthews
01427 676551

Housing Benefit
Local Council Tax Support



Housing Strategy Manager
Di Krochmal
01427 676615 / 07800 727742



Home Choices
Housing Strategy
Affordable Housing
Health & Wellbeing

People & OD Manager
Emma Redwood
01427 676591 / 07429 043998

Human Resources
Payroll
Pensions
Communications
Health & Safety—Corporate



Housing & Enforcement Manager
Andy Gray
01427 675195 / 07500 033532



Public Protection
Environmental Protection
Community Safety & ASB
Disabled Facilities Grants
Housing & Planning Enforcement
Food, Health & Safety-External
Selective Licencing

Enterprising Communities Manager
Grant White
01427 675145 / 07810 658396

Grant Schemes
Councillor Initiative Funds
Rural Transport
Community Engagement
CCTV
Voluntary and Community Sector



Home Choices Manager
Rachel Parkin
01427 676613 / 07775 026252



Home Choices
Homelessness
Housing Register
Domestic Abuse

Licencing & Local Land Charges Manager
Phil Hinch
01427 676610 / 07810 658378



Licencing—Premises / Taxis
Land Charges
Stray Dogs / Kennel Contract
Public Health Funerals

Interim Planning Policy Manager
Rachael Hughes
01427 676548

Policy - Central Lincs/Local Plan
Neighbourhood Planning



Building Control Manager
Phil Westmoreland
01427 676670



Building Control
Building Regulations
Dangerous Structures
(Out of Hours)